

RNAV1 (DME/DME or GNSS)
STANDARD DEPARTURE CHART -
INSTRUMENT (SID) - ICAO

DISTANCES IN NAUTICAL MILES
TRACKS ARE MAGNETIC
ALTITUDES AND ELEVATIONS ARE IN FEET

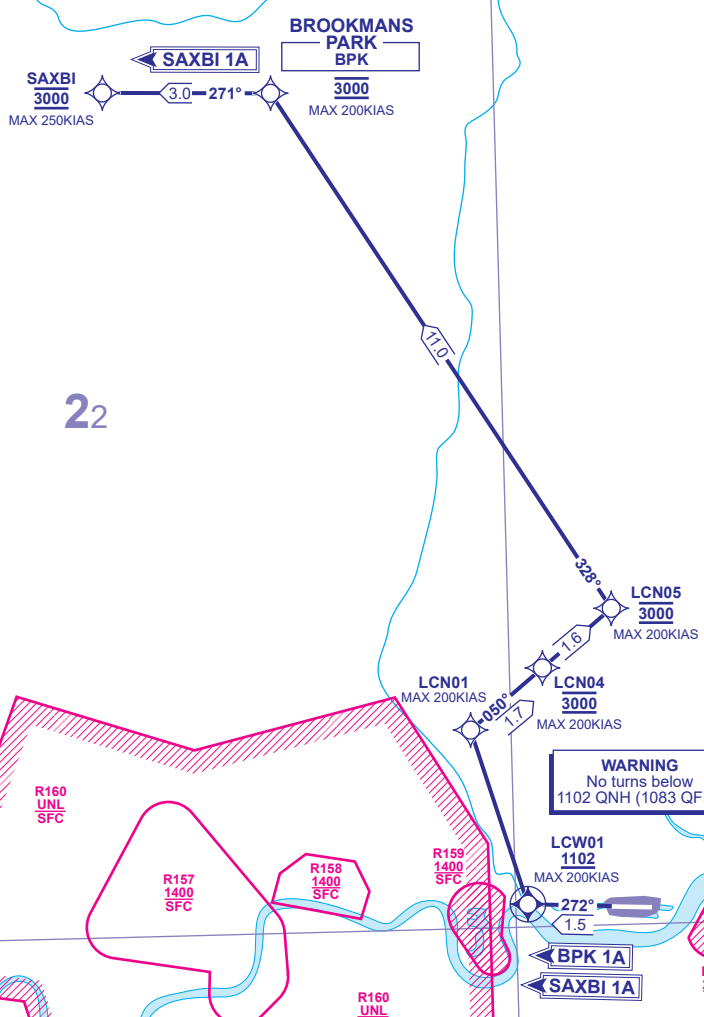
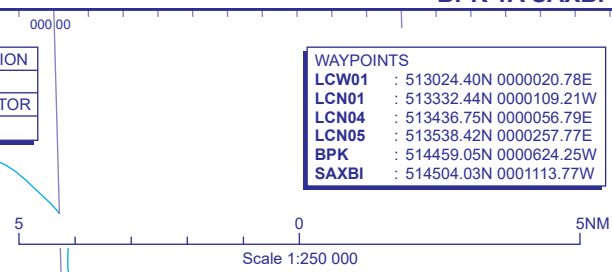
LONDON CITY RWY 27
BPK 1A SAXBI 1A

TRANSITION ALTITUDE
6000
AREA MNM ALT (x100)
24

ATIS	136.355*	CITY INFORMATION
TWR	118.080, 129.455	CITY TOWER
RAD	128.025, 132.700, 133.455	THAMES DIRECTOR

* See EGLC AD 2.18 for full details.

WAYPOINTS	
LCW01	: 513024.40N 0000020.78E
LCN01	: 513332.44N 0000109.21W
LCN04	: 513436.75N 0000056.79E
LCN05	: 513538.42N 0000257.77E
BPK	: 514459.05N 0000624.25W
SAXBI	: 514504.03N 0001113.77W



BPK 1A RWY 27	Straight ahead to LCW01 , direct to LCN01 - LCN04 - LCN05 , left to BPK .	N57, N601 northbound and for landing at London Luton.
SAXBI 1A RWY 27	Straight ahead to LCW01 , direct to LCN01 - LCN04 - LCN05 , left to BPK , left to SAXBI .	N27.

OBSTACLE CLEARANCE - RWY 27: Maintain minimum 7.20% climb gradient to **1102 (1083)**.

NOTE 1. Close-in obstacles exist for departures from RWY 27. See Aerodrome Obstacle Chart and EGLC AD 2.10 Aerodrome Obstacles.
NOTE 2. Gradients in excess of the minimum obstacle clearance climb gradients are required for airspace purposes.
NOTE 3. Adhere to maximum speed limits where specified by waypoint constraints.
NOTE 4. Maximum 250KIAS below **FL100** unless authorised by ATC.
NOTE 5. Expect first CPDLC Data Link Authority to be EGTG.
NOTE 6. For RCF Procedure see AD 2.22, 3(c).

ADDITIONAL RNAV DATA
1. DME/DME only procedure: no critical nav aids.
2. RNAV1 SIDs are available only for approved aircraft that are either GNSS equipped or that have DME/DME and INS/IRU with automatic runway updating capability.